

SWINDON TOWN

FOOTBALL CLUB

official programme



1/-

First-hand

Lively

Reports

Complete

Comprehensive

Coverage

Close-up Action

Shots

Every Game

At home or away

The Evening Advertiser
has it covered

M^cILROYS

the Department Store
with that something extra *Service!*

Free

DELIVERIES
ESTIMATES ON CARPETS & CURTAINS
CARPET FITTING

WILLIAM McILROY (Swindon) LTD.

Tel. 5294



SWINDON TOWN FOOTBALL COMPANY LIMITED

Registered Office: COUNTY GROUND, SWINDON

President: Mr. W. J. CASTLE

Vice-President: Mr. J. DAVIES

Directors:

Chairman: Mr. H. E. LANE

Vice-Chairman: Mr. R. FRICKER

Messrs. F. L. COLLINGS, A. W. DONE, M. EARLE, C. J. GREEN, F. PLYER,
H. WILLIAMS, K. H. WILMER and Dr. J. NICHOLAS

General Manager: Mr. R. A. MORSE

Team Manager: Mr. F. FORD

SATURDAY, 24th JANUARY, 1970

F.A. Challenge Cup — 4th Round

SWINDON TOWN v CHESTER

Kick-off 3 p.m.

SWINDON TOWN	CHESTER	OFFICIALS
1 Downsborough	1 Carling	REFEREE: Mr. D. J. Lyden (Birmingham)
2 Thomas	2 Cheetham	
3 Trollope	3 Sear	
4 Butler	4 Sutton	
5 Burrows	5 Turner	
6 Harland	6 Bradbury	
7 Smith	7 Edwards	
8 Smart	8 Spence	
9 Horsfield	9 Webber	
10 Noble	10 Draper	LINESMEN:
11 Rogers	11 Provan	Red Flag: Mr. P. K. Byford (Witham)
12	12	Yellow Flag: Mr. K. H. Limbird (Stourbridge)
Colours: Red and White	Colours: Sky Blue	

G. A. Streetly

Tobacconist and Confectioner

10 BOURNE ROAD
MOREDON SWINDON
Telephone 4956

C. Goodenough and Sons

Removal and Storage Contractors
any distance

25 Cricklade Street Swindon
Telephone 4555 and 3855

CECIL GREEN

Artistic Decorations in all its branches

12 Armstrong Street
Swindon Wilts
Telephone 4593

W. J. SELWOOD

Telephone Swindon 5884

Saddlery

General Leather Goods Manufactured and
Repaired to Your Individual Requirements

103 BROAD STREET
SWINDON WILTSHIRE

Notton's Cafe

COUNTY ROAD

200 yards from Ground

Perfect meals at all times

For High Class
Central Heating, Plumbing
Painting and Decorating
Electrical Installations
and Repairs

NORTH WILTS Sanitary and Heating Co. Ltd.

NEWPORT STREET SWINDON
Telephone 5373/4



THE ALCOHOL FUEL

COATE GARAGE

REPAIRS - OVERHAULS - WELDING
SERVICING - REBORING - TYRES
Props. E. V. & W. H. Mattick
Marlborough Road Swindon

Leese, Ing & Co. Ltd.

Mineral Water and
Squash Manufacturers

LANSDOWN ROAD SWINDON
Telephone 22744

Maylott Studios

For Group and Sports Photographs
Official Photographer to
Swindon Town Football Club

31 Faringdon Road
Telephone 22792

Always at your service

L. Bibby

For all Types — Rags, Iron and Metal, etc.
Spot Cash Paid, Please Telephone 2101
and our van will call.

THE PADDOCK ERMIN STREET
STRATTON ST. MARGARET

news & views

Today we welcome complete newcomers to Swindon. This is the first occasion the two teams have met, either in League or Cup football. One of the reasons is the fact that Chester has played in Division 3 (North) and Division 4.

Although the Club was formed as long ago as 1884, Chester did not come into League football until 1931. They were elected along with Mansfield Town, chiefly because of their fine record in the Cheshire League. Strange as it may seem, they can still claim League seniority over such later arrivals as Aldershot, Ipswich Town, Colchester, Scunthorpe, Shrewsbury, Workington, Peterborough and Oxford United.

Chester's League history is very much an enigma. In their first nine seasons the Club averaged 50 points. The final placings were 3rd, 4th, 10th, 3rd, 2nd, 2nd, 9th, 6th and 3rd. It can be seen that on several occasions they only just missed promotion to Division 2. Remember only one club from Division 3 (North) moved up to a higher Division each season. Then came a slump and Chester were never in a position above 12th in the next eleven seasons. Twice re-elected as bottom club their final positions were 20th, 18th, 12th, 13th, 19th, 20th, 24th, 24th, 17th, 21st and 21st. The last total meant becoming members of Division 4 on its formation in 1958. Still the bad patch pursued them, and again they had to seek re-election. However the Club struggled on (what heroes are the officials of these smaller clubs) and last season came the long awaited revival. This has continued during the current year, and there is great heart in the Club, and a tremendous fighting spirit in the team, as instanced by their victory over Bristol City (a hard team to defeat) in the last round of the F.A. Cup.

At present Chester occupy 9th, position in Division 4, having gained 28 points from 27 matches, and they have won five games away from home. Swindon in comparison are in 6th position in Division 2, with 32 points from 28 games, and have won three and drawn six games on opponents' grounds — twelve points against eight by Chester. Cup-ties often produce surprise results. This could be a very hard game indeed. Our opponents must have learned much from their encounter with Bristol City.

Chester play on a delightful ground at Sealand Road, which they have occupied since 1906. They play in sky-blue from top to toe, although their former colours were blue and white stripes, and prior to 1930 were black and white.

The only connections we have had with Chester were very slight. Mr. Louis Page after leaving Swindon became its manager, and Mr. John Harris (now manager of Sheffield United) is the son of one of our former managers, Mr. Neil Harris, and for a period lived in Swindon, and still has many friends here. His first post as a manager was at Chester. Two former players had short spells there, namely Johnny Thomas, a right winger, and Ken Brandon, outside-left. Some of our older supporters will remember them being on our books in the early fifties. Brandon came to us from the Royal Army Pay Corps stationed at Devizes, and played as an amateur for a short period.

THE GREAT WESTERN HOTEL

(OPPOSITE SWINDON RAILWAY STATION)

The business man's hotel with a top class
steak bar too!

Specialists in
LUNCHEONS and DINNERS
WEDDING PARTIES and RECEPTIONS
good food — quick service

J. ARKELL and SONS LIMITED Telephone SWINDON 22047

Mills and Merricks Limited

16-17 Bridge Street Swindon

Telephone 5365/6

"HOME OR AWAY"

our function is to ensure that your home is
tastefully and economically furnished

SWINDON'S COMPLETE HOUSE FURNISHERS

New City Office Supplies Limited

Office and Stationery Suppliers
to Industry and Commerce

6 Commercial Road Swindon

Telephone Swindon (STD Code 0793) 4605



CLARK BROS. (Swindon) LTD

Building and Civil Engineering Contractors

CONSULT US FOR

BUILDING AND CIVIL ENGINEERING
CONSTRUCTION IN ALL ITS PHASES

STRATTON ROAD

SWINDON

Telephone Swindon 27261

Supporters' Club Notes

Today we welcome to the County Ground the team, officials and supporters of Chester. Cup-ties never fail to stir the imagination of fans or bring out the best performances of teams. Disparity in League positions, or Leagues themselves, cannot be relied upon to give any guide as to which team will eventually win. Chester must be afforded the respect due to any team reaching today's Cup-tie. So lots of vocal support to the final whistle from all Swindon supporters here this afternoon.

Today's Supporters' Club donation of £2,000 to the Chairman of the Swindon Town Football Co. is the first donation from this year's Supporters' Club Weekly competition. Until the end of the season, to facilitate the Football Club, the full General Committee has arranged to donate a monthly cheque of £400 — all from the Competition. We would very much like to increase these amounts, and this cannot really be achieved without more agents, despite the sterling work of our present agents. With the improvements to the ground, starting with the work on the new stand in March, we welcome anyone who will join us to help improve facilities and raise the County Ground to the standard required in the coming decades. So contact our promoter, Mr. Phil Hart, at our H.Q.'s office under the Town End stand any Friday evening or Saturday afternoon, or phone him at Purton 601.

Mr. Harris, the Hon. Secretary of the Swindon Hospital Broadcasting Society, thanks all those who contributed towards the collection on Saturday, 10th January, which amounted to £97. There will be many listening to today's Cup-tie, in Hospital wards throughout Swindon, thanks to your generosity.

Finally, here are the final details of the Annual Supporters' Club Dinner and Dance at McIlroy's Ballroom, Regent Street:

Date: Wednesday, 11th March.

Dinner: 7 p.m. for 7.30 p.m.

Menu: Minestrone Soup; Halibut au Gratin; Roast Beef, with appropriate vegetables; Pear Hélène; Cheese and Biscuits; Coffee.

Tickets: Dinner and Dance 30/-; Dance only 7/6. Obtainable from the Social Secretary, Mrs. B. Ranger, Swindon 5158, any Committee member or Club officer.

Face in the crowd – is it you?



In all future editions of this Season's programme we shall publish a photograph of a small section of the crowd at a previous match, one member of which will be clearly indicated by means of a circle. This person will be entitled to a free seat at the next match on producing the programme at the office.

WE AIM TO PLEASE — TRY US

Tunleys

(1)

Glass (2)

Wallpaper (3)

Paint (4)

Polishes (5)

Artist Materials (6)

Prints (7) Ladders (8) Mirrors (9) Brushes (10) Aladdin Heaters (11)

MEMBERS OF THE



12/13 Gloucester Street Swindon Wiltshire



throughout the West

you will find Bradley Estates beautifully situated to meet the requirements of modern living. If you are thinking about a new home and would like to receive full details of our current and planned estates write now to 74 Victoria Road Swindon Wiltshire. Please send me details of

- Green Meadow Estate, Swindon, Wiltshire
- Nythe Estate, Swindon, Wiltshire
- Monkton Park Estate, Chippenham, Wiltshire
- Park Hill Estate, Frome, Somerset
- Damory Down Estate, Blandford Forum, Dorset
- Harkwood Farm Estate, Poole, Dorset
- Roman Way Estate, Bourton-on-the-Water, Gloucestershire

Name.....

Address.....



BRADLEYESTATES



CHESTER FOOTBALL CLUB

Pen Pictures Season 1969/70

The Club was founded in 1885 being an amalgamation of two local clubs, Chester Rovers and Kings School Old Boys.

Friendly fixtures were played until season 1890 when Chester became one of the founder members of the now defunct Football Combination. They remained members of this League until season 1910/1911 when they were admitted to the Lancashire Combination. During membership of the Football Combination they won the Championship on one occasion in season 1908/09. The previous season, 1907/08, they became holders of the Welsh Cup for the first time, an honour which has been repeated on two occasions since in seasons 1932/33 and 1947/48.

The most memorable day in the history of the Club was the 1st June, 1931, when application was made for membership of the Football League (Northern Section). Clubs seeking re-election were Rochdale and Nelson with Chester and Manchester Central as the new applicants. Rochdale obtained 47 votes, Chester 27, Nelson 27 and Manchester Central 4. At the second ballot Chester obtained 28 to Nelson's 20 and they were duly elected. The first Football League game was against Wigan on 25th August, 1931, before a crowd of 12,625, resulting in a 4-0 win, all the goals coming in the second half. Chester have been members of the Football League since that date but regrettably have not won promotion either from the old Northern Section or the present 4th Division.

Chester's first encounter in the F.A. Cup was against Wrexham in 1888 which Wrexham won 1-0. Chester have had some memorable games in this Competition but the most exciting was the 3rd Round tie against Fulham in season 1932/33. Chester had beaten Rotherham and Yeovil in the previous rounds and Fulham, then a 2nd Division team were drawn at Sealand Road in the 3rd Round. Chester were given little chance by the pundits of beating the famous Fulham side but before a crowd of 14,328 spectators, Fulham were demoralised, being defeated 5-0. Outside-left, Hedley, scored four goals and inside-right, Mercer, one, in this wonderful victory. Many who witnessed this game considered this was the best-ever side and for the record the team was: Johnson; Bennett, Herod; Pitcairn, Skitt, Bell; Armes, Mercer, Mantle, Creswell, Hedley. There was anti-climax in the 4th Round when, after a goal-less draw at Chester they lost the replay at Halifax 3-2. The most recent achievement in the F.A. Cup was in season 1964/65, when Chester were drawn away to Manchester United in the 3rd Round. There were 45,000 spectators at this game and after 11 minutes Jimmy Humes gave Chester the lead. It took all the experience and guile of Manchester United to save the game, which they did late in the second half, eventually winning 2-1.

The ground record was established in 1952 when after holding Chelsea to a 2-2 draw at Stamford Bridge, the replay took place at Sealand Road on 16th January, 1952, when 20,500 spectators watched a game which Chester lost 2-3. This record still stands though the record receipts were against Newcastle United in the F.A. Cup 3rd Round on 22nd January, 1966, 19,800 spectators paying £6,339 to watch the game.

TERRY CARLING (Goalkeeper)

Height 5ft. 9ins. Weight 11st. 2lbs. Born Otley, Yorks. Signed in December 1966 from Walsall. Also had spells with Leeds United and Lincoln.

CLIFF SEAR (Full-back)

Height 5ft. 10½ins. Weight 10st. 3lbs. Born Rhosyllen, North Wales. Cliff signed for Chester in April 1968 from Manchester City, with whom he had played for several seasons.

BARRY ASHWORTH (Wing-half)

Height 6ft. Weight 11st. 7lbs. Born Stockport. Signed from Tranmere Rovers in August 1967. Formerly with Hartlepool and Southend.

DON ROGERS SPORTS

29 FARINGDON ROAD SWINDON

Telephone 27378

Main suppliers to Swindon Town Football Club

Stockists of

**All leading makes of Football Boots and Clothing
Table Tennis, Badminton, Rugby and Hockey equipment**

IN FACT THE COMPLETE SPORTS OUTFITTER

RIMES of SWINDON

**WATCH THIS SPACE
FOR FUTURE EXCURSIONS**

**102 Commercial Rd., Swindon
Telephone 27113**

**46 Cricklade St., Cirencester
Telephone 3479**

Dobell Shearman & Co. Ltd.

HIGH STREET SWINDON

Telephone 4961

**FANCY and COMMERCIAL STATIONERS
TYPEWRITERS and OFFICE EQUIPMENT**

Greetings Cards for all Occasions
from Leading Art Publishers



W. J. CASTLE

Office and Bakery

**4 and 5 MARKET STREET
SWINDON**

Telephone 22017

Specialists—

**BIRTHDAY CAKES - WEDDING CAKES
DAIRY CREAM - PASTRIES
BUNS - ROLLS - SPONGES**



OUR VISITORS (continued)

MICHAEL SUTTON (Wing-half/Forward)

Height 5ft. 10ins. Weight 11st. 8lbs. Born Norwich. Signed for Chester in close season 1967/68 from Norwich, with whom he had been since leaving school.

GRAHAM TURNER (Centre-half)

Height 5ft. 11ins. Weight 10st. 8lbs. Born Ellesmere Port, Cheshire. Signed for Chester from Wrexham in January 1968. Turned professional whilst with Wrexham.

WILLIAM DEARDEN (Forward)

Height 5ft. 9ins. Weight 10st. 2lbs. Born Oldham. Signed for Chester in June 1968 from Crewe Alexandra, after previously being with Oldham.

ANDREW PROVAN (Forward)

Height 5ft. 5ins. Joined Chester from York City in August 1968. Previously with Barnsley. Consistent goal scorer. Born Greenock, Scotland.

ROY CHEETHAM (Wing-half/Full-back)

Height 5ft. 10½ins. Signed during season 1968/69 on return from America. Previous club, Manchester City, who he joined from school. Born Barton.

DEREK DRAPER (Inside-forward)

Height 5ft. 7ins. Fee paid to Bradford season 1968/69. Previous clubs, Swansea and Derby County. Under 23 Welsh International. Born Swansea.

ALAN CAUGHTER (Full-back)

Height 5ft. 8ins. Signed part-time professional in season 1968/69. Schoolmaster. Born Bangor, North Wales.

NIGEL EDWARDS (Centre-half/Full-back)

Height 5ft. 11ins. Signed full-time professional in season 1968/69. Welsh Youth International. Born Wrexham.

TERRY BRADBURY (Half-back)

Height 6ft. Signed during close season. Regular member of Wrexham's first team last season. Previous clubs, Chelsea, Orient and Southend. Born in London.

NEIL GRIFFITHS (Half-back)

On ground staff last season, showing great promise in Cheshire League team. Signed as full-time professional in July 1969. Born Stoke-on-Trent.

KEITH WEBBER (Centre-forward/Inside-forward)

Height 5ft. 9½ins. Born Cardiff. Signed during close season from Doncaster Rovers. Previous clubs, Brighton, Everton and Wrexham.

ALAN SPENCE

Signed recently from Oldham. Had previous service with Southport, for whom he was leading post-war goal scorer.

ALAN TARBUCK

Signed October 1969. Local boy who went direct from school to Everton. He joined Crewe Alexandra from Everton in season 1967/68. Season 1967/68 he scored 10 goals in 29 appearances and in season 1968/69 he scored 6 goals in 37 appearances.

GRAHAM BIRKS

Born Sheffield. Signed from Southend United in October 1969. Previous clubs, Sheffield Wednesday and Peterborough.

STEPHEN STACEY

On temporary transfer from Ipswich.

Division I I

Fixture List

1969

August

9 Blackburn Rovers	(A) 0—2
13 Cardiff City	(A) 2—2
16 Carlisle United	(H) 2—2
19 Cardiff City	(H) 2—1
23 Aston Villa	(A) 2—0
30 Charlton Athletic	(H) 5—0

September

2 League Cup (2) Swansea	(A) 3—1
6 Blackpool	(A) 2—3
13 Oxford United	(H) 0—0
16 Middlesbrough	(A) 0—0
20 Queen's Park Rangers	(A) 0—2
24 League Cup (3) Oxford	(A) 0—1
27 Leicester City	(H) 1—1
30 Millwall	(H) 2—1

October

4 Bolton Wanderers	(A) 1—0
7 Carlisle United	(A) 2—2
11 Sheffield United	(H) 2—1
18 Hull City	(H) 1—0
25 Portsmouth	(A) 1—3

November

1 Norwich City	(H) 2—0
8 Birmingham City	(A) 0—2
15 Watford	(A) 0—0
22 Huddersfield Town	(H) 2—1
29 Preston North End	(A) 1—3

December

6 Bristol City	(H) 1—1
13 Oxford United	(A) 0—0
20 Blackpool	(H) P
26 Aston Villa	(H) 1—1
27 Charlton Athletic	(A) 1—1

1970

January

3 F.A. Cup Blackburn	4—0
10 Queen's Park Rangers	(H) 0—0
17 Leicester City	(A) 2—0
24 F.A. Cup (4) Chester	(H)
31 Bolton Wanderers	(H)

February

7 Sheffield United	(A)
14 Blackburn Rovers	(H)
21 Portsmouth	(H)
28 Hull City	(A)

March

7 Huddersfield Town	(A)
14 Preston North End	(H)
21 Bristol City	(A)
28 Watford	(H)
30 Norwich City	(A)
31 Birmingham City	(H)

April

4 Millwall	(A)
14 Middlesbrough	(H)

Appearances

Name	Div. II	League	F.A.	Cup
		Cup	Cup	Winners Cup
Downsborough	28	2	1	2
Thomas	28	2	1	2
Trollope	28	2	1	2
Butler	28	2	1	2
Burrows	27	2	1	1
Harland	28	2	1	2
Smith	14 (1)	2	1	2
Horsfield	27	2	1	2
Smart	28	2	1	2
Noble	25	2	1	2
Rogers	22	2	1	2
Jones	8 (5)			(1)
Blick	1 (4)			1
Heath	15 (1)			
Down	(1)			
Penman	1		(1)	

(Playing as substitute in brackets)

Goalscorers

Name	Div. II	League	F.A.	Cup
		Cup	Cup	Winners Cup
Horsfield	11		1	3
Noble	9	3		1
Jones	4			1
Rogers	3		1	
Smith	2		1	
Burrows	1			
Trollope	1			
Thomas	1			
Smart	2			
Butler			1	
Opponents	1			

League Table – Division II

(up to and including Tuesday, 20th January, 1970)

	P	W	D	L	F	A	P
Huddersfield Town	27	15	7	5	46	27	37
Sheffield United	29	15	5	9	54	25	35
Blackburn Rovers	29	15	5	9	40	34	35
Cardiff City	27	14	6	7	45	24	34
Queen's Park Rangers	29	14	6	9	49	38	34
Swindon Town	28	9	12	6	35	29	32
Middlesbrough	27	13	6	8	36	30	32
Blackpool	27	12	8	7	35	33	32
Leicester City	28	11	9	8	42	38	31
Carlisle United	29	12	7	10	45	41	31
Bristol City	27	9	8	10	33	31	26
Birmingham City	28	9	7	12	39	47	25
Bolton Wanderers	28	8	8	12	40	44	24
Portsmouth	28	8	8	12	41	52	24
Norwich City	27	10	4	13	26	33	24
Millwall	27	7	10	10	32	42	24
Oxford United	26	8	8	10	21	27	24
Charlton Athletic	28	5	13	10	25	47	23
Hull City	26	9	4	13	40	45	22
Preston North End	27	7	7	13	29	38	21
Watford	28	6	7	15	30	36	19
Aston Villa	26	4	9	13	22	41	17

Key of the Board

First Section

- A—Blackpool v. Mansfield Town
- B—Carlisle United v. Aldershot
- C—Charlton Athletic v. Q.P.R.
- D—Chelsea v. Burnley
- E—Liverpool v. Wrexham
- F—Derby County v. Sheffield United
- G—Gillingham v. Peterborough United
- H—Sutton United v. Leeds United
- I—Manchester Utd. v. Manchester City
- J—Middlesbrough v. York City
- K—Sheffield Wed. v. Scunthorpe Utd.
- L—Southampton v. Leicester City
- M—Tottenham Hotspur v. Crystal Palace
- N—Tranmere Rovers v. Northampton Tn.
- O—Watford v. Stoke City
- P—Wolverhampton Wdrs. v. Ipswich Tn.
- Q—Hull City v. Millwall
- R—Barrow v. Reading
- S—Bristol Rovers v. Torquay United
- T—Bury v. Luton Town

Second Section

- A—Plymouth Argyle v. Rotherham Utd.
- B—Shrewsbury Town v. Barnsley
- C—Stockport County v. Brighton & H.A.
- D—Chesterfield v. Lincoln City
- E—Colchester United v. Workington
- F—Exeter City v. Hartlepool
- G—Grimsby Town v. Swansea Town
- H—Oldham Athletic v. Bradford
- I—Southend United v. Notts County

Forthcoming Matches on This Ground

SATURDAY, 31st JANUARY, 1970

Division II

SWINDON TOWN v. BOLTON WANDERERS

Kick-off 3 p.m.

TUESDAY, 3rd FEBRUARY, 1970

Football Combination Cup

SWINDON TOWN v. ARSENAL

Kick-off 7.30 p.m.

SATURDAY, 7th FEBRUARY, 1970

Football Combination

SWINDON TOWN v. FULHAM

Kick-off 3 p.m.



Going by Car?

SHEFFIELD UNITED

Saturday, 7th February, 1970

SWINDON to SHEFFIELD . . .

Leave Swindon by the A361 Shrivenham Road via Highworth, Lechlade, and Burford to **Chipping Norton**.

31½ miles

Continue on A361 via Bloxham to **Banbury**.

44 miles

Leave Banbury via South Bar Street and North Bar Street on the Southam Road (A423) follow signs to Rugby via Southam, Dunchurch (A426) continue to **Rugby**.

69 miles

Continue on (A426) and leave Rugby via Newbold Road to Gibbet Hill roundabout, after roundabout at junction take A4114 and turn right for the **M1**.

76½ miles

Follow signs "Leicester M1" until after Leicester Forest Service Area, then signs "Nottingham and North M1".

Continue along M1 until intersection (31) then take the **A57**.

146½ miles

Continue on the A57 following signs "Sheffield, (Handsworth) A57" at ¼ miles on bear left and ¼ miles further keep right then left. Cross Sheffield ring road. Continue until junction with Granville Road, cross over Queens Road at roundabout, keep left into St. Mary's Road then turn left into **Bramall Lane**.

155½ miles

Route kindly supplied by R.A.C.



Previous Matches

DIVISION II

SATURDAY, 10th JANUARY, 1970

Drew with Queen's Park Rangers (home) 0—0.

Team: Downsborough; Thomas, Trollope; Butler, Burrows, Harland; Smith, Smart, Horsfield, Noble, Rogers.

Attendance: 18,219.

Referee: Mr. G. W. Hill (Leicester).

SATURDAY, 17th JANUARY, 1970.

Beat Leicester City (away) 2—0.

Team: Downsborough; Thomas, Trollope; Butler, Burrows, Harland; Smith, Smart, Horsfield, Noble, Rogers. Sub. Heath.

Scorer: Horsfield (2).

Attendance: 24,378.

Referee: Mr. J. R. Taylor (Wolverhampton).

HELLENIC LEAGUE

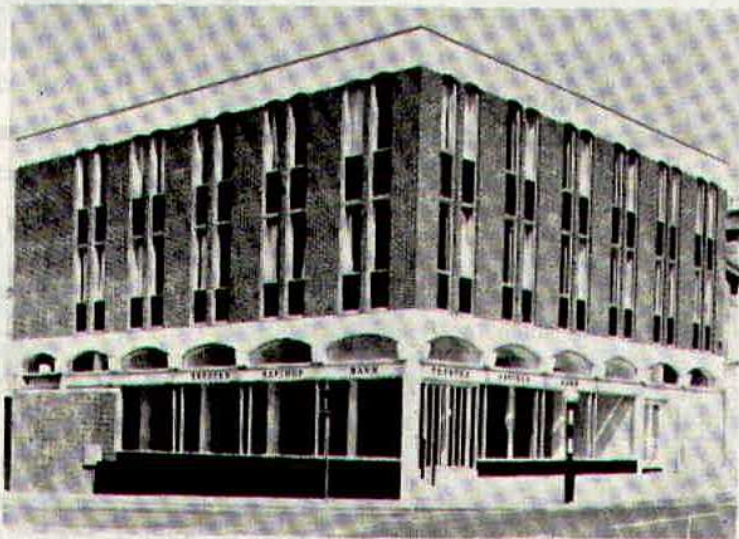
SATURDAY, 10th JANUARY, 1970

Lost to Amersham (away) 1—0.

Team: Grzadowski; Allen, Claypole; Ackling, Grubb, Dakin; Kale, Stroud, Baggaridge, Jellings, Moss.

T RUSTEE
S AVINGS
B ANK

93 Commercial Road
Swindon



Facilities include

- CURRENT ACCOUNT SERVICE
- 24 HOUR CASH DISPENSER
- T.S.B. UNIT TRUST
- CONTRACTUAL SAVINGS SCHEME (giving substantial Tax benefits)

**INTEREST 7% IN THE
SPECIAL INVESTMENT DEPT.**

Hatton's Newsagency

A. J. D. & N. J. Woodhouse

Newsagents :: Tobacconists
Confectioners

Agents for Wessex School of Motoring
Booking Agents for Rimes Coaches

6 REGENT CIRCUS (near G.P.O.)
Telephone Swindon 22731

BRETT'S

PET and GARDEN SUPPLIES

32-33 Commercial Road
and
6 Cromwell Street Swindon

THE PORK SHOP

(Swindon Bacon Curing Co. Ltd.)

Specialists in

Bacon - Pork - Cooked Ham

50 FLEET STREET SWINDON
Telephone 22122

J. WILMER

Coal Merchants

St. Margaret's Road Swindon

Telephone 22535

SOUTHERN LAUNDRY CO. LTD.

Launderers and Dry Cleaners

HAYDON STREET SWINDON
Telephone 4161

At Your Service

A. E. LUDLOW LIMITED

Wholesale Fruit and Potato Merchant

COLBOURNE STREET
SWINDON WILTSHIRE
Telephone Swindon 3583

We deliver Fresh Fruit, Vegetables
and Potatoes daily—Wholesale Only

FOR ALL YOUR ANGLING NEEDS
CONSULT

Frank Woodward

Swindon's Fishing Tackle Specialist

25 HAVELOCK STREET SWINDON
Telephone 3879

For Paints of Good Quality

H. S. Hodges & Sons

(SWINDON) LTD.

Cricklade Road Swindon
Telephone 22422

Dulux, Brolac, Valspar, Wallicharm, etc.

24 hour Delivery
Service

YOUR COMPLETE JANITORIAL SERVICE

Wilts Cleaning Supply Service

Kembrey Warehouse Rear 255 Cricklade Road
SWINDON

Telephone 21012

Represented by G. ALEXANDER
Telephone Swindon 27833



Stan Harland the Town's popular skipper.

HARRY LUNN

(Ex NOTTS COUNTY, PORTSMOUTH and SWINDON TOWN F.C.)

Fish Bar and Restaurant
27-28 COMMERCIAL ROAD SWINDON

RESTAURANT open 9 a.m. to 10 p.m. for

Snacks - Lunches - High Teas - Evening Meal

FISH BAR open Mid-day and Evenings until 11 p.m.

HULFORD MOTORS LIMITED

SELF DRIVE HIRE

Fleet of 1969/8 Fords Escorts De-Luxe
Cortinas De-Luxe Cortinas 1600 Estate
(Bench Seat Column Change) — Zephyr V4s

SHRIVENHAM ROAD

(200 yards from Football Ground)

Telephone 4934

Large Car Park Available

COWLEY BROS. (Wroughton) LTD.

BUILDERS OF MODERN ATTRACTIVE
HOUSES and BUNGALOWS

Developments at

SWINDON

WROUGHTON

BADBURY

Office

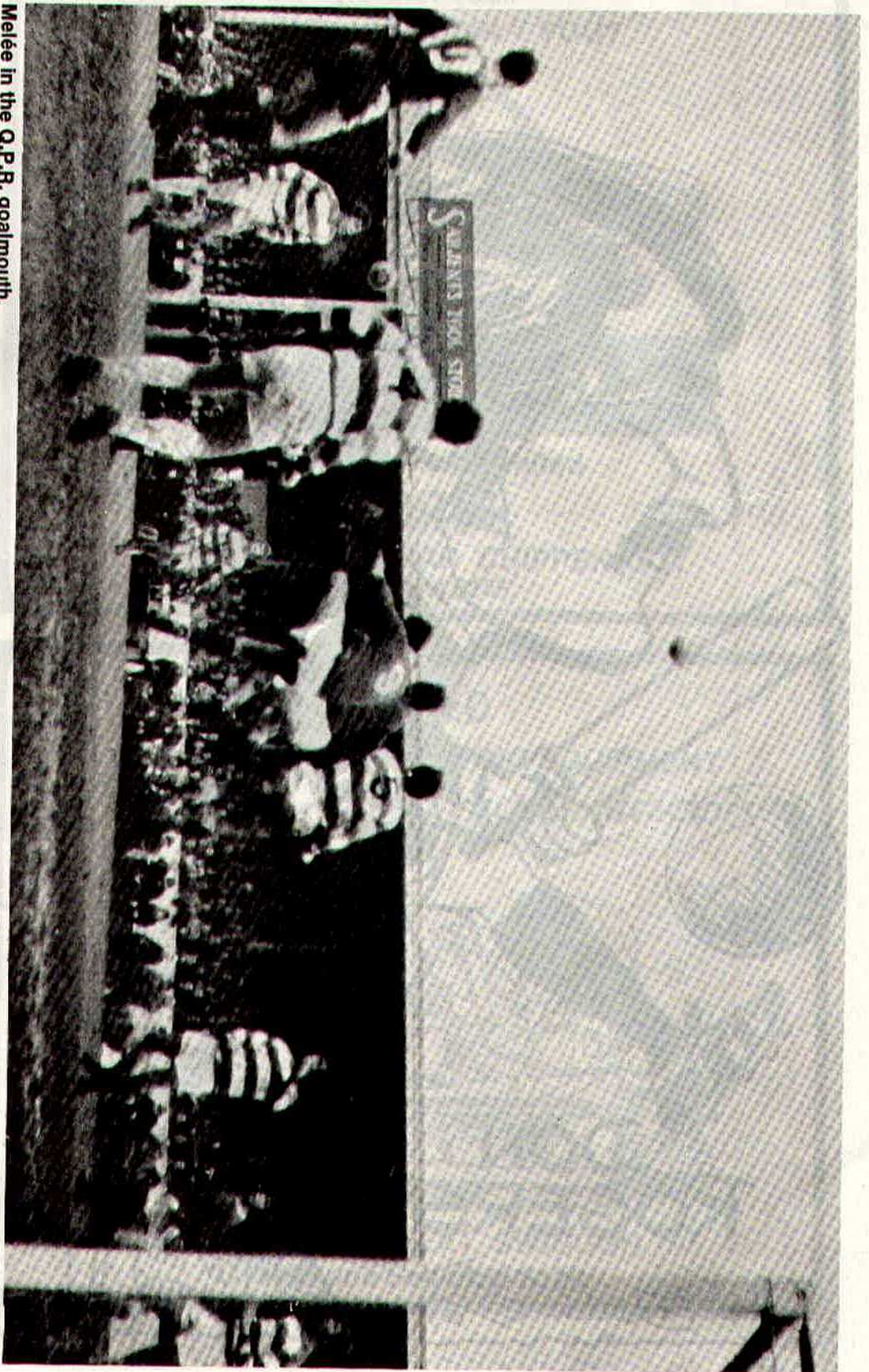
28 NEWPORT STREET
SWINDON

Telephone Swindon 6870

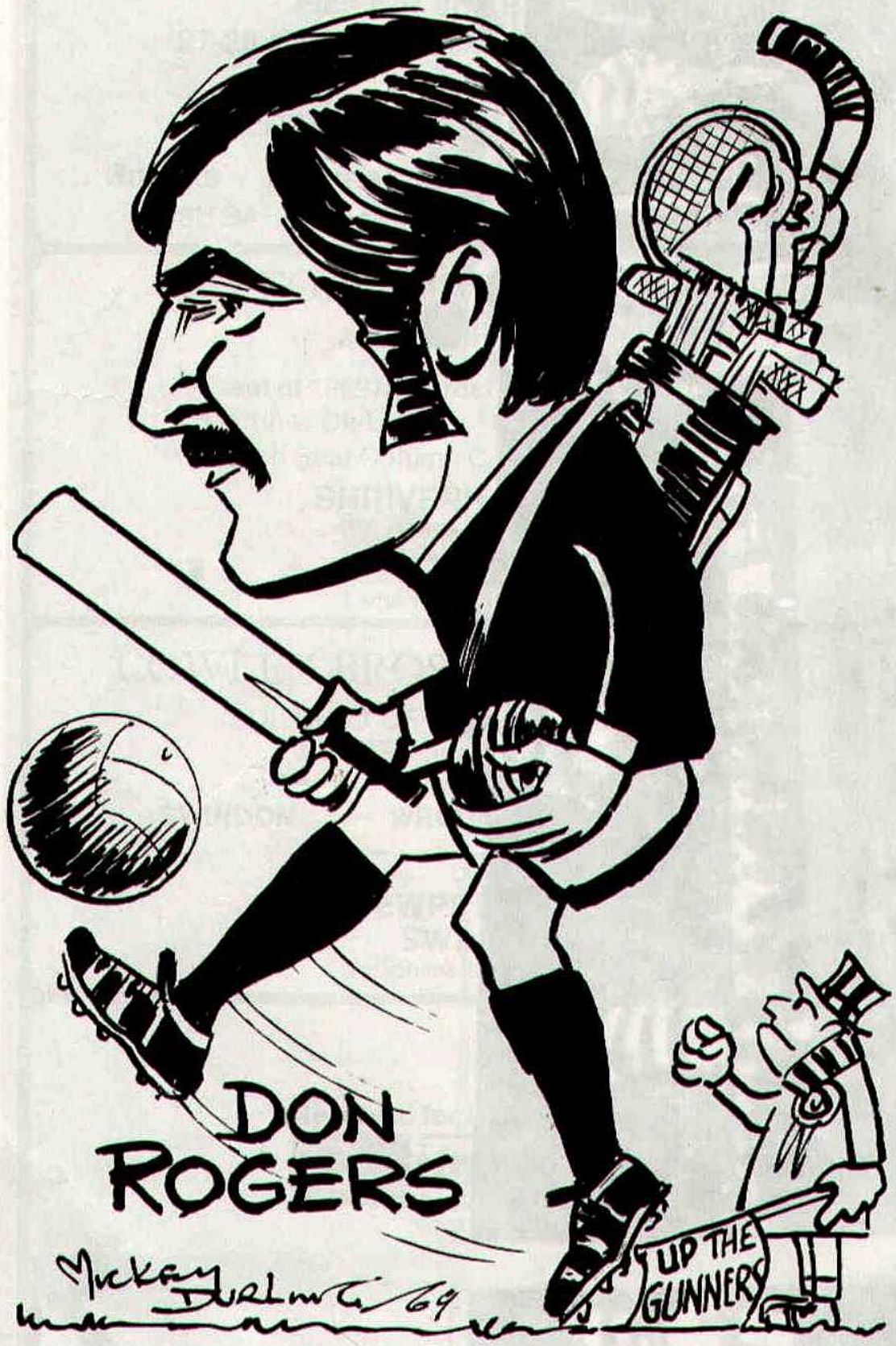
Reserved for British Rail



Inter-City



Melée in the Q.P.R. goalmouth.



**DON
ROGERS**

Mickey Durlin 69

LIP THE
GUNNERS

Suppliers to the Swindon Team
MAY WE SUPPLY YOU?



EARLE

of Chippenham Limited

MAIN

FORD

DEALERS

COCKLEBURY ROAD CHIPPENHAM

Telephone 3255

H. HIBBERD LIMITED

FOR YOUR EARTH-MOVING EQUIPMENT

Plant Hire Contractors



40 NEWPORT STREET SWINDON

Telephone Swindon 6125

Football Combination

Fixture List

1969

August

9	Southampton	(H)	2—2
16	Swansea Town	(A)	0—1
23	Queen's Park Rangers	(H)	1—4

September

4	Oxford United	(A)	2—0
6	Bristol City	(H)	1—2
17	Cardiff City	(A)	3—2
20	Arsenal	(H)	1—2
27	Luton Town	(A)	0—2

October

4	Reading	(H)	1—2
7	Bristol Rovers	(A)	P
11	Ipswich Town	(A)	1—0
21	Bristol City	(A)	2—7
25	Crystal Palace	(H)	1—0

November

8	Plymouth Argyle	(H)	3—1
15	Crystal Palace	(H)	1—2
22	Swansea Town	(A)	1—1
29	Tottenham Hotspur	(H)	1—4

December

8	Peterborough United	(A)	0—2
13	Leicester City	(H)	0—2
17	Plymouth Argyle	(A)	1—1
20	West Ham United	(A)	3—1
27	Swansea Town	(H)	0—2

1970

January

17	Gillingham	(A)
20	Cardiff City	(H)
24	Chelsea	(H)
27	Arsenal	(A)

February

3	Arsenal	(H)
7	Fulham	(H)
10	Bristol Rovers	(H)
17	Walsall	(A)
24	Northampton	(A)

March

7	Birmingham City	(H)
11	Crystal Palace	(A)
18	Norwich City	(A)
21	Bristol Rovers	(A)

April

4	Bournemouth & B.A.	(H)
---	--------------------	-----	-------

Appearances

Name	Appearances		Goalscorers	
	Foot. Comb.	Foot. Cup	Foot. Comb.	Foot. Cup

Price	1			
Dawson	7	3		
Fry	14	4		
Desmeules	9	2		
Blick	16	5		
Handrick	16	5	1	
Heath	4			
Penman	11	1	1	
Down	13	3	6	
Dangerfield	14 (1)	4	10	1
Moss	4	1		1
Bailey	11 (2)	5	1	
Grzadowski	2			
Hubbard	15	5		
Jones (R)	11	3		
Allen (K)	8	3		
Jones (C)	4	2		
Wetson	1	1		1
Claypole	10	2		
Porter	2	2	1	1
Allen K. R.	2	2		
Smith		1		1
Boyd		1		

(Playing as substitute in brackets)

AKERS GARAGE LIMITED

THE STREET MOREDON SWINDON WILTSHIRE

Telephone Swindon 3457/8

main dealer for
VAUXHALL/BEDFORD
and
**Parts and Accessories
Sales and Service**

Showrooms open
MONDAY to FRIDAY — 8 a.m. to 8 p.m.
SATURDAY — Closed 7 p.m.
SUNDAYS — 10 a.m. to 2 p.m. for Petrol and Viewing



MODERN LIVING IN EXPERIENCED HANDS

Wilson homes are the result of over 60 years experience in house building. The Company Architect and his design team are always researching into the ever changing requirements of home buyers, to give them better designed homes, which are easy to run, easy to maintain and comfortable to live in.



All our houses and bungalows are built to the stringent specification of the National House Builders Registration Council who will guarantee your home for 10 years.

Visit a Wilson Show Home and you will see for yourself why Wilson's have such a reputation in giving value for money.

WILSON

(Swindon) LTD., 90-92 Commercial Road, Swindon Telephone 6361 (3 lines)

seating manufacturers for Stadium Seats Ltd

- * Heavy, medium and light steel fabrication
- * Custom made production line equipment
- * Ancillary work for industry and the building trade

FAST EFFICIENT SERVICE BY



MARTYN LYNSHAW LTD

BOUNDARY WORKS - STRATTON ROAD - SWINDON - WILTS

Telephone 21844

spectator seating in high density polyethylene

- * Supplied to over 36 Football League clubs
- * Any colour. No maintenance
- * Industrial seats for the food, electronics and pharmaceutical industries
- * Largest supplier of spectator and industrial seating in Europe

STADIUM SEATS LTD

STRATTON ROAD - SWINDON - WILTS Telephone 21844